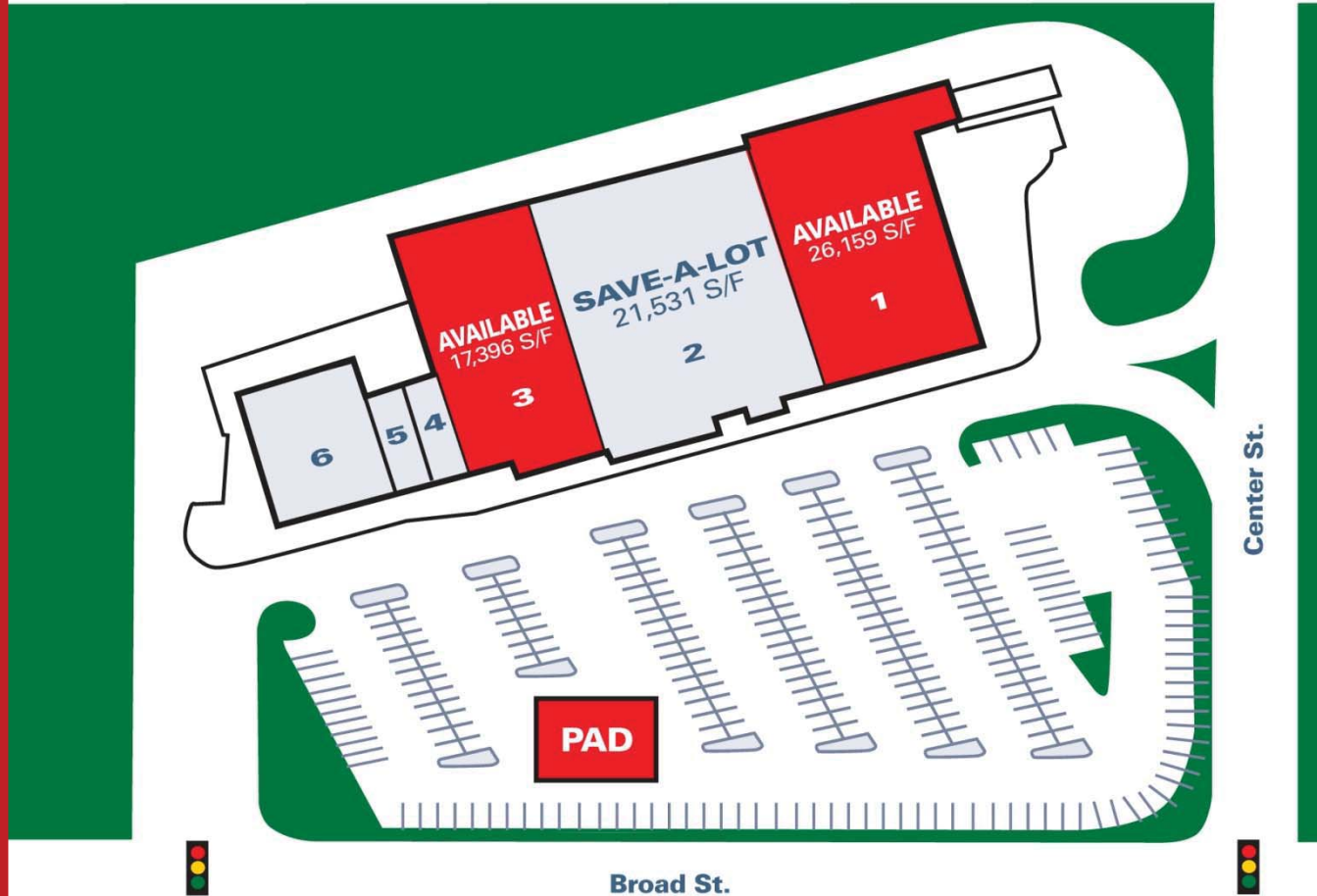


LEADING
THE WAY
IN RETAIL
LEASING

MANCHESTER CT

SAVE-A-LOT PLAZA

UNIT	TENANT	SF
1	Available	26,159
2	Save-A-Lot	21,531
3	Available	17,396
4	Restaurant	1,205
5	Metro PCS	1,517
6	O'Reilly's Auto Parts	7,500
PAD Available		5,000



Northeast Retail
Leasing & Management Company, LLC

360 Bloomfield Avenue • Suite 208 • Windsor, CT 06095
Telephone: (860) 683-9000 • Facsimile (860) 683-1600
www.northeastretail.com

LEADING
THE WAY
IN RETAIL
LEASING

SAVE-A-LOT PLAZA

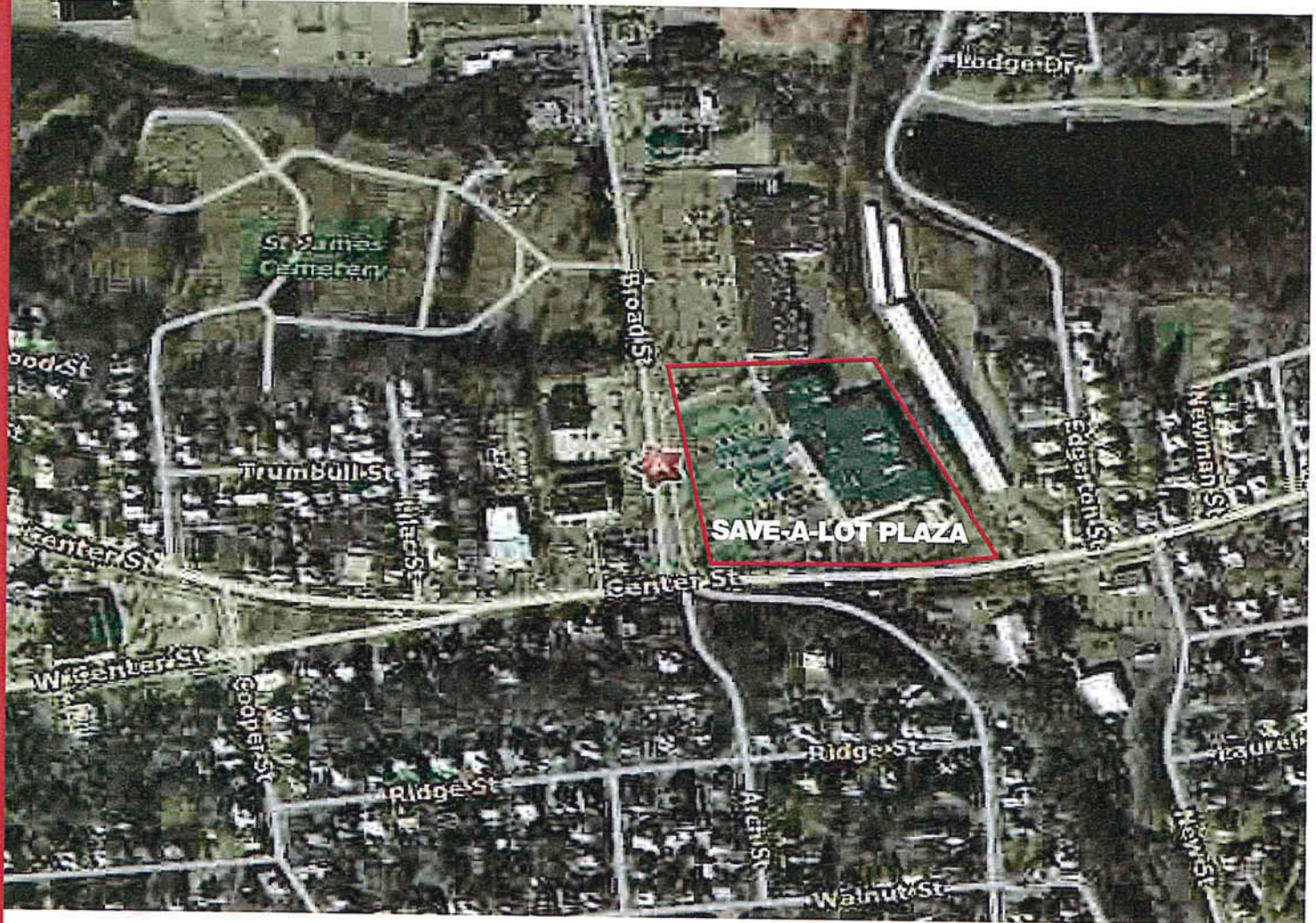
AERIAL VIEW

Shaw's Plaza is a 75,452 sf community shopping center, anchored by a 21,531sf Save-A-Lot

Built in 1998 at the corner of Center Street (Route 44) and Broad Street, it is located at the busiest intersection in Manchester and benefits from a daily traffic count in excess of 40,000 cars per day.

DEMOGRAPHICS

RADIUS	POP.	MEDIAN INCOME
3 MI	54,279	\$47,981
5 MI	116,582	\$53,388
10 MI	422,383	\$43,850



360 Bloomfield Avenue
Suite 208 Windsor, CT 06095
Telephone: 860 683-9000
Fax: 860 683-1600



Northeast Retail
Leasing & Management Company, LLC

All information furnished is from sources deemed reliable and is submitted subject to errors, omissions, change of price or rental, change of other terms and conditions, suitable references, prior sale, lease or financing, or withdrawal without notice. No representation is made to the accuracy of any information furnished.