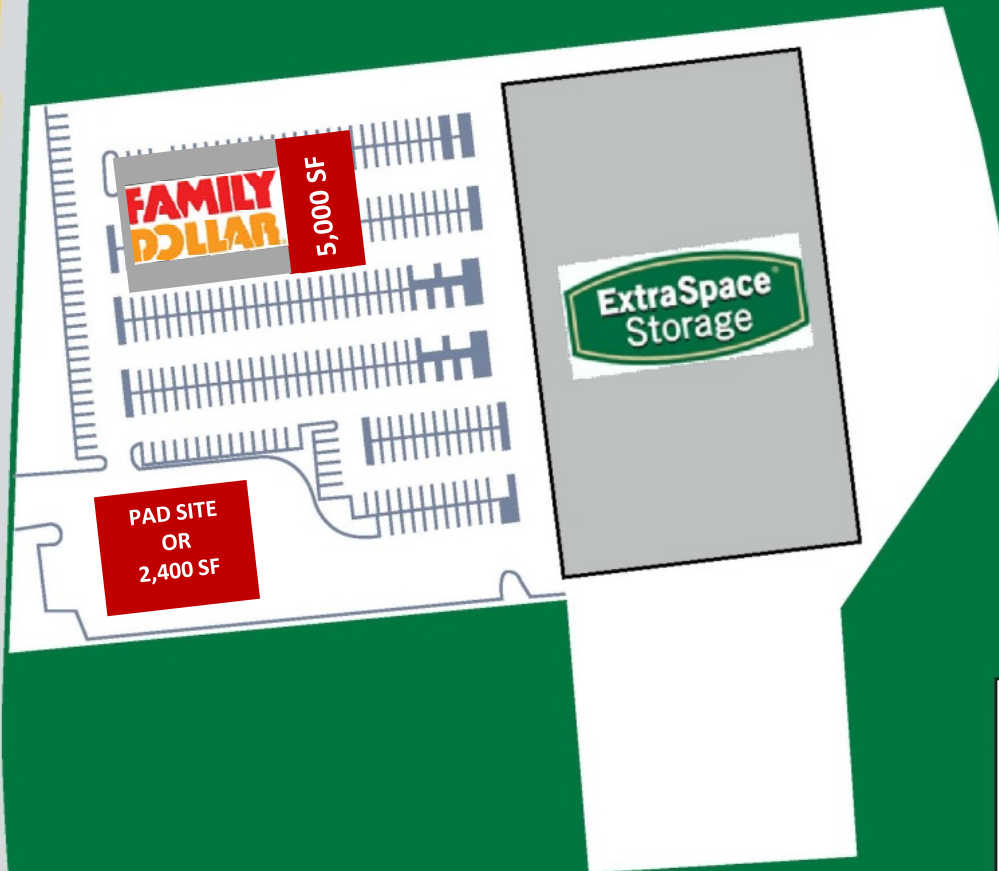


LEADING
THE WAY
IN RETAIL
LEASING

NEW BRITAIN CT

Corbin Farms Plaza



**FAMILY DOLLAR
UNDER CONSTRUCTION**

**EXTRA SPACE
OPEN TO THE PUBLIC**

5,000 SF and PAD SITE AVAILABLE

- Signalized Intersection
- High Traffic Main Street Location
- Pad Site Drive-thru available

360 Bloomfield Avenue, Suite 208
Windsor, CT 06095
Telephone: 860 683-9000
Fax: 860 683-1600
www.northeastretail.com



Northeast Retail
Leasing & Management Company, LLC

All information furnished is from sources deemed reliable and is submitted subject to errors, omissions, change of price or rental, change of other terms and conditions, suitable references, prior sale, lease or financing, or withdrawal without notice.

No representation is made to the accuracy of any information furnished.

LEADING
THE WAY
IN RETAIL
LEASING

NEW BRITAIN CT

Corbin Farms Plaza AERIAL VIEW

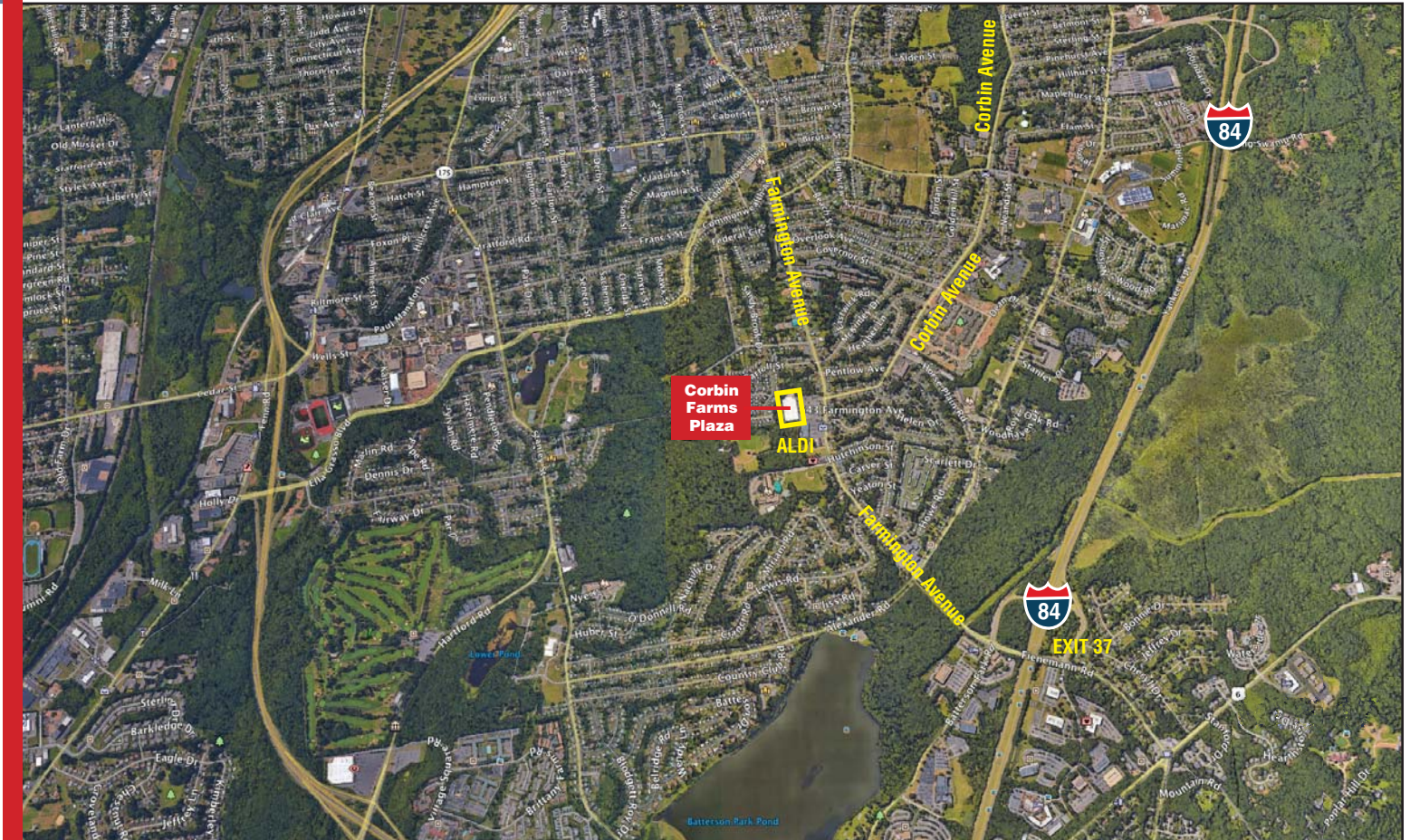
Redevelopment of the
Former 85,000 sf WalMart.

The only large retail parcel in the
densely populated, under-retailed
Northern section of New Britain.

- The building is available in its entirety or can be subdivided. There is also an outparcel available for a build to suit up to 15,000 sf
- The center is located on Farmington Ave, a busy commuter road less than a mile from the Fineman Road interchange on I-84.
- The signalized entrance to the center is at Farmington Ave and Corbin Ave which is a major feeder road leading south.

3 Mile Demographics

Population 86,451
Average Income \$67,633
Employees 48,742



360 Bloomfield Avenue, Suite 208
Windsor, CT 06095
Telephone: 860 683-9000
Fax: 860 683-1600
www.northeastretail.com



Northeast Retail
Leasing & Management Company, LLC

All information furnished is from sources deemed reliable and is submitted subject to errors, omissions, change of price or rental, change of other terms and conditions, suitable references, prior sale, lease or financing, or withdrawal without notice.
No representation is made to the accuracy of any information furnished.