

LEADING  
THE WAY  
IN RETAIL  
LEASING

# EAST HARTFORD CT

## SCHOOL STREET SQUARE

UNIT	TENANT	S/F
1	Available	10,000
2	Planet Fitness	23,625
3	Grossman's	25,000
3A	Available	13,000
4	Available	2,000
5	Available	2,873
6	Available	3,450
7	Available	2,000
8	First Choice Health	3,450
9	Available	11,700
10	Family Dollar	9,079
11	Metro PCS	1,860
12	Available	1,978
13	Available	1,344
14	Available	2,500
15	Rainbow Shops	5,500
16	Luen Hop	1,500
17	Superior Liquors	2,430
18	Available	4,000
19 & 20	O'Reilly Auto Parts	7,400
21	H & R Block	1,400
22	Dunkin Donuts	3,048
23	Pro Nails	900
24	Subway	1,600
25	PAE	3,450
26		2,180



**Northeast Retail**  
Leasing & Management Company, LLC

360 Bloomfield Avenue, Suite 208, Windsor, CT 06095  
Telephone: 860 683-9000  
Fax: 860 683-1600  
[www.northeastretail.com](http://www.northeastretail.com)





## LEADING THE WAY IN RETAIL LEASING

# SCHOOL STREET SQUARE AERIAL VIEW

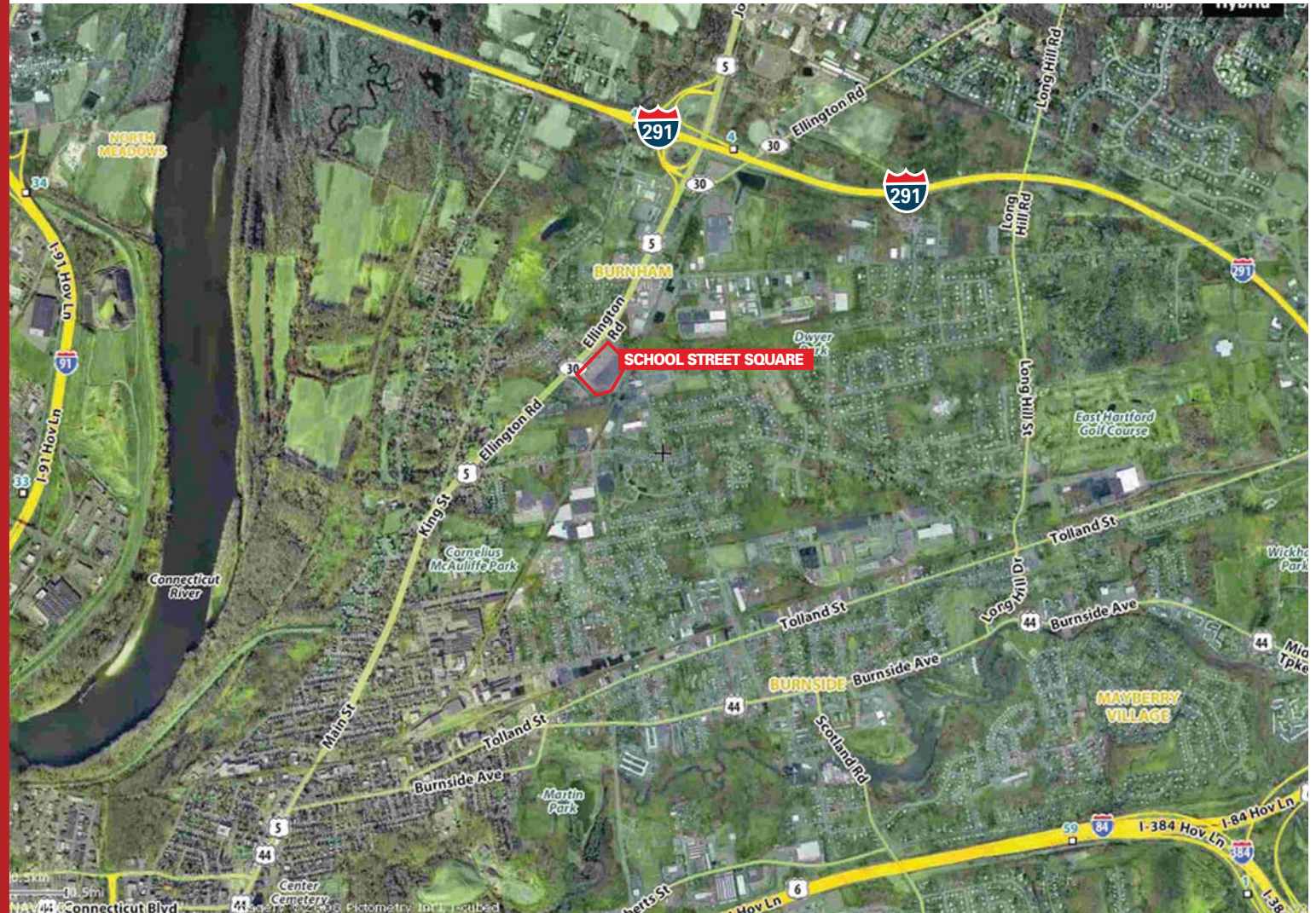
School Street Square, a regional Shopping Center serves a trade area of diverse customers in East Hartford, South Windsor and Windsor.

The Center is conveniently located at the signalized intersection of Route 5 and School Street, less than one (1) mile from Interstate 291. A very large population base has numerous ways to access the Shopping Center which has led to its long history as a vibrant Shopping Center.

The Center's Tenant mix includes a pharmacy, medical clinics, woman's ready to wear stores, liquor store and other retail and services oriented tenancies.

### DEMOGRAPHICS

RADIUS	POP.	MEDIAN INCOME
1 MI	6,041	\$51,370.00
3 MI	51,606	\$48,763.00
5 MI	199,401	\$44,624.00
7 MI	356,141	\$52,099.00



360 Bloomfield Avenue  
Suite 208, Windsor, CT 06095  
Telephone: 860 683-9000  
Fax: 860 683-1600



**Northeast Retail**  
Leasing & Management Company, LLC

All information furnished is from sources deemed reliable and is submitted subject to errors, omissions, change of price or rental, change of other terms and conditions, suitable references, prior sale, lease or financing, or withdrawal without notice. No representation is made to the accuracy of any information furnished.